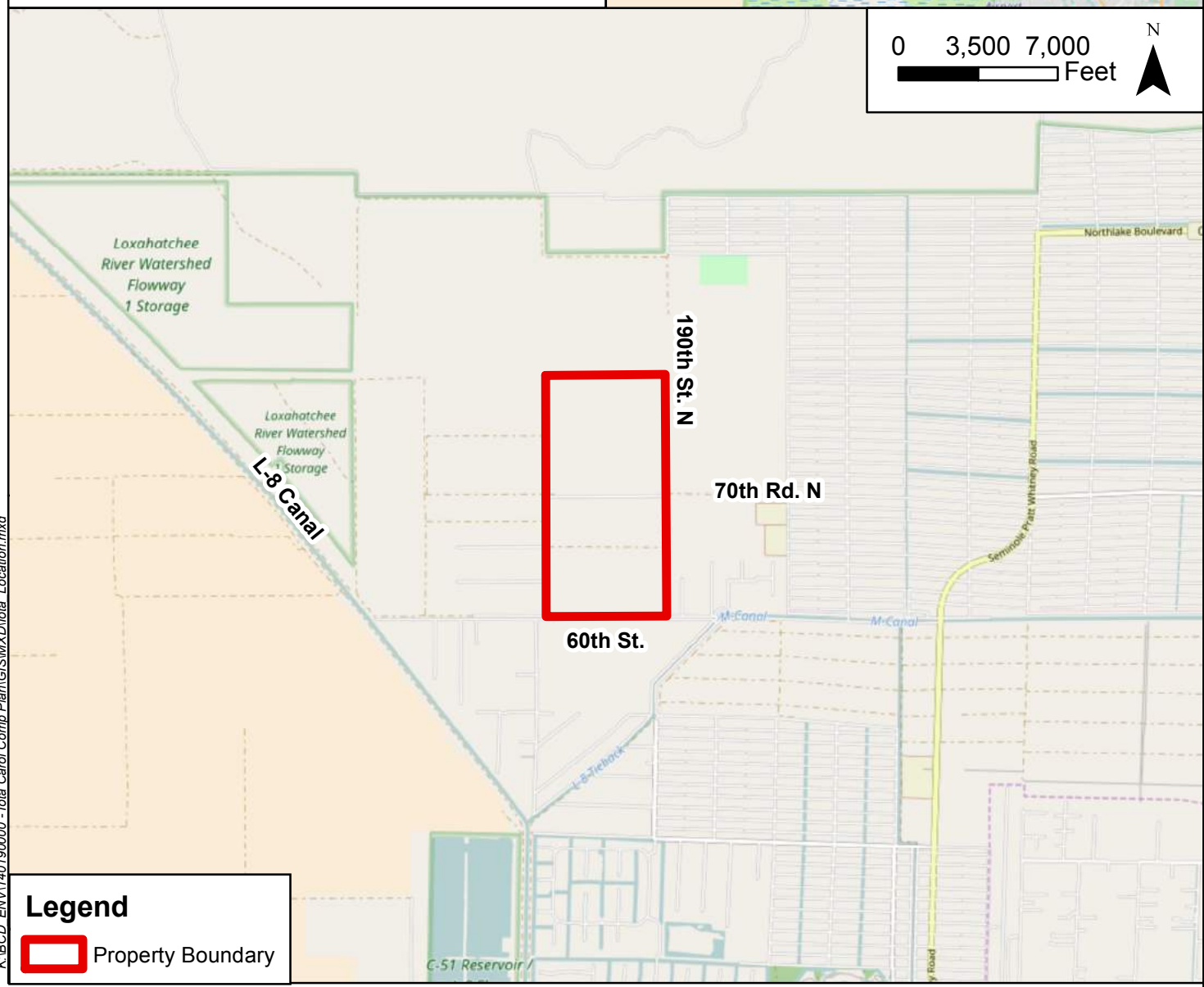
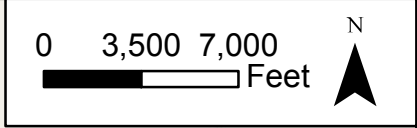
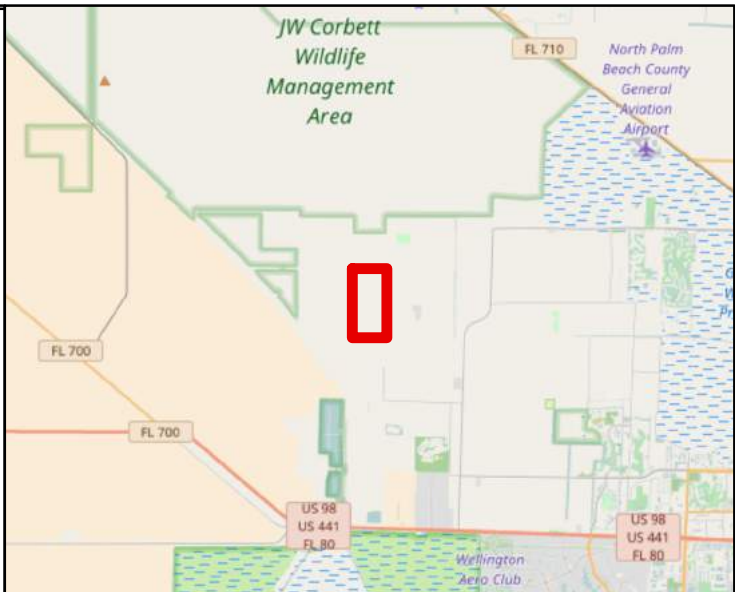



Palm Beach County, Florida



Legend

 Property Boundary

K:\BCD_ENV\140190000 - Iota Carol Comp Plan\GIS\MXD\lota_Location.mxd



© 2016 Kimley-Horn and Associates, Inc.
 1615 S. Congress Ave., Ste. 201
 Delray Beach, FL 33445
 Phone (561) 330-2345 www.kimley-horn.com

Project Location Map

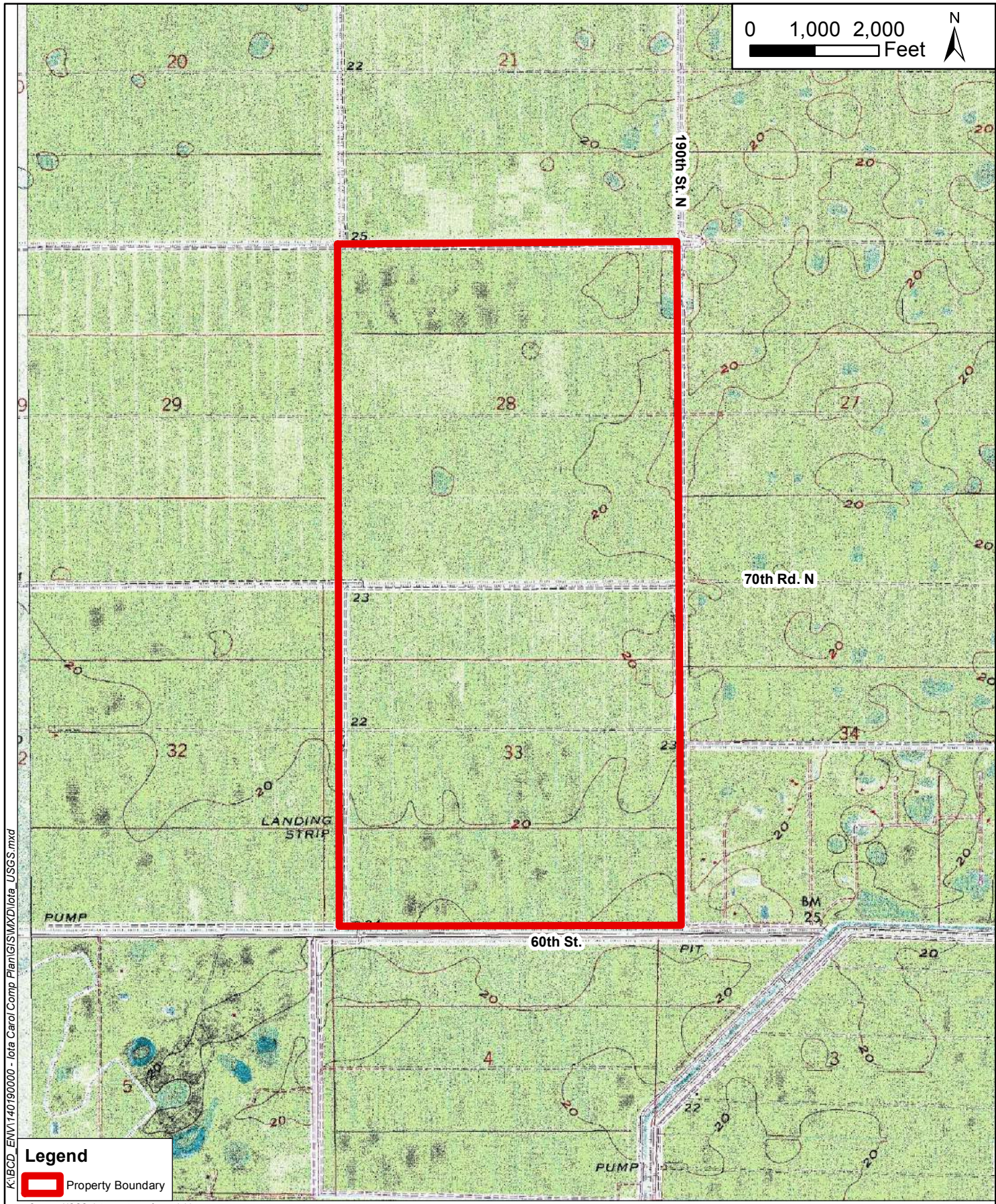
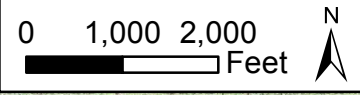
**Iota Carol-Comprehensive Plan Amendment
 Palm Beach County, Florida**

1 inch = 7,000 feet

PROJECT NUMBER: 140190000

OCTOBER 2015

FIGURE 1



K:\BCD_ENV\140190000 - Iota Carol Comp Plan\GIS\MXD\Iota_USGS.mxd

Legend

Property Boundary

Source: USGS data courtesy of www.iabins.org

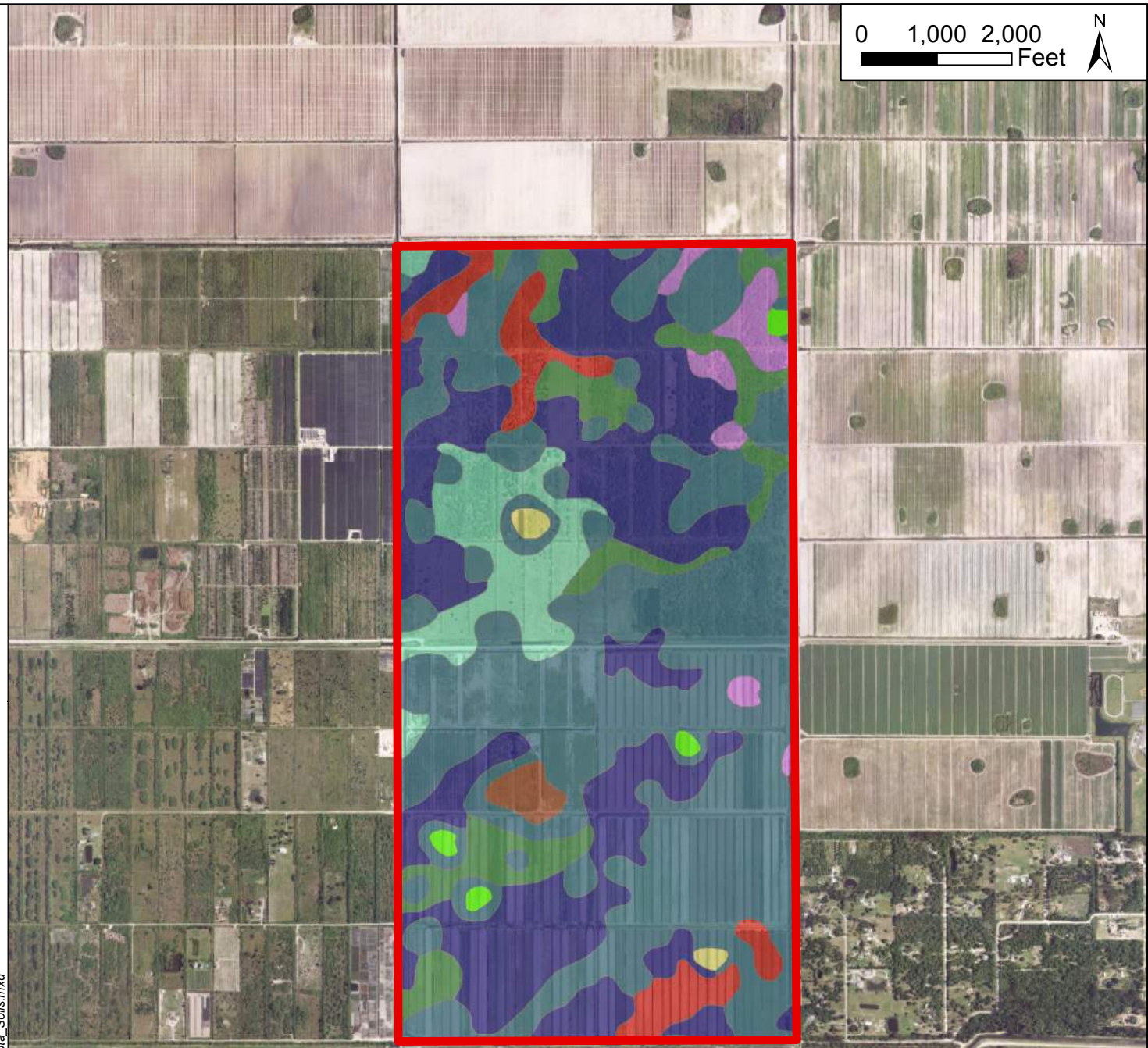
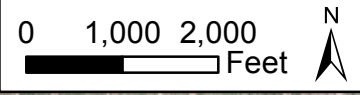
Kimley»Horn

© 2016 Kimley-Horn and Associates, Inc.
 1615 S. Congress Ave., Ste. 201
 Delray Beach, FL 33445
 Phone (561) 330-2345 www.kimley-horn.com


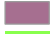







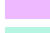
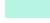
USGS Topographic Quadrangle Map

**Iota Carol-Comprehensive Plan Amendment
 Palm Beach County, Florida**

1 inch = 2,000 feet	PROJECT NUMBER: 140190000	OCTOBER 2015	FIGURE 2
---------------------	---------------------------	--------------	----------



Legend

-  Property Boundary
- Hydric Soils**
-  10: Boca fine sand
-  15: Floridana fine sand
-  24: Okeelanta muck
-  29: Pineda fine sand
-  36: Riviera fine sand
-  37: Riviera fine sand, depressional
- Non-Hydric Soils**
-  3: Arents-Urban land complex, organic substratum
-  16: Hallandale fine sand
-  30: Pinellas fine sand
-  49: Wabasso fine sand

Source: NRCS data courtesy of USGS Data Gateway

K:\IBCD_ENV\140190000 - Iota Carol Comp Plan\GIS\MXD\Iota Soils.mxd

NRCS Soils Map

**Iota Carol-Comprehensive Plan Amendment
Palm Beach County, Florida**



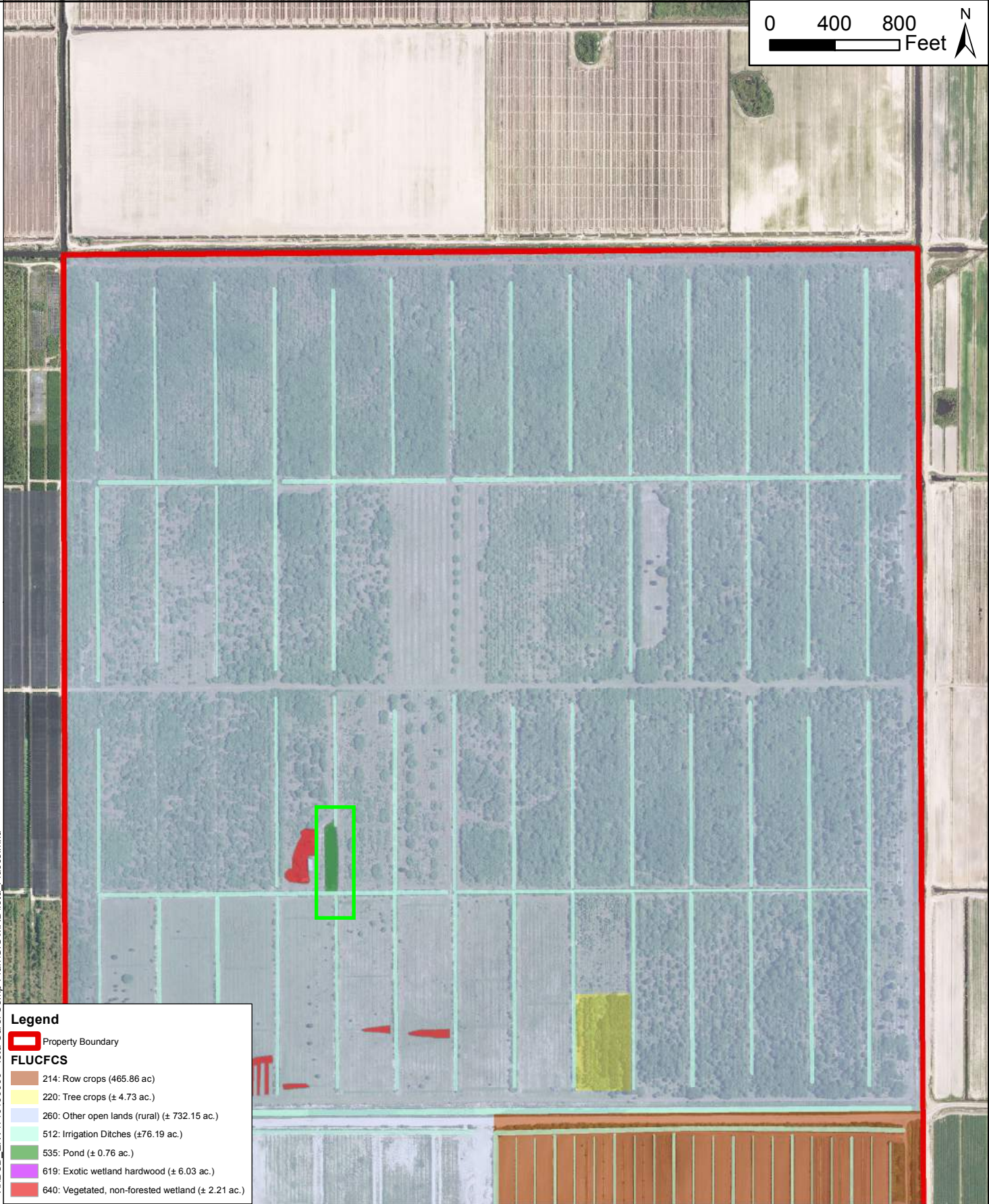
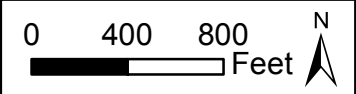
© 2016 Kimley-Horn and Associates, Inc.
1615 S. Congress Ave., Ste. 201
Delray Beach, FL 33445
Phone (561) 330-2345 www.kimley-horn.com

1 inch = 2,000 feet

PROJECT NUMBER: 140190000

OCTOBER 2015

FIGURE 3



K:\BCD_ENV\140190000 - Iota Carol Comp Plan\GIS\MXD\Iota_Fluccs.mxd

Legend

- Property Boundary

FLUCFCS

- 214: Row crops (465.86 ac)
- 220: Tree crops (± 4.73 ac.)
- 260: Other open lands (rural) (± 732.15 ac.)
- 512: Irrigation Ditches (±76.19 ac.)
- 535: Pond (± 0.76 ac.)
- 619: Exotic wetland hardwood (± 6.03 ac.)
- 640: Vegetated, non-forested wetland (± 2.21 ac.)

Source: Palm Beach County



© 2016 Kimley-Horn and Associates, Inc.
 1615 S. Congress Ave., Ste. 201
 Delray Beach, FL 33445
 Phone (561) 330-2345 www.kimley-horn.com

Florida Land Use, Cover, and Forms Classification System Map

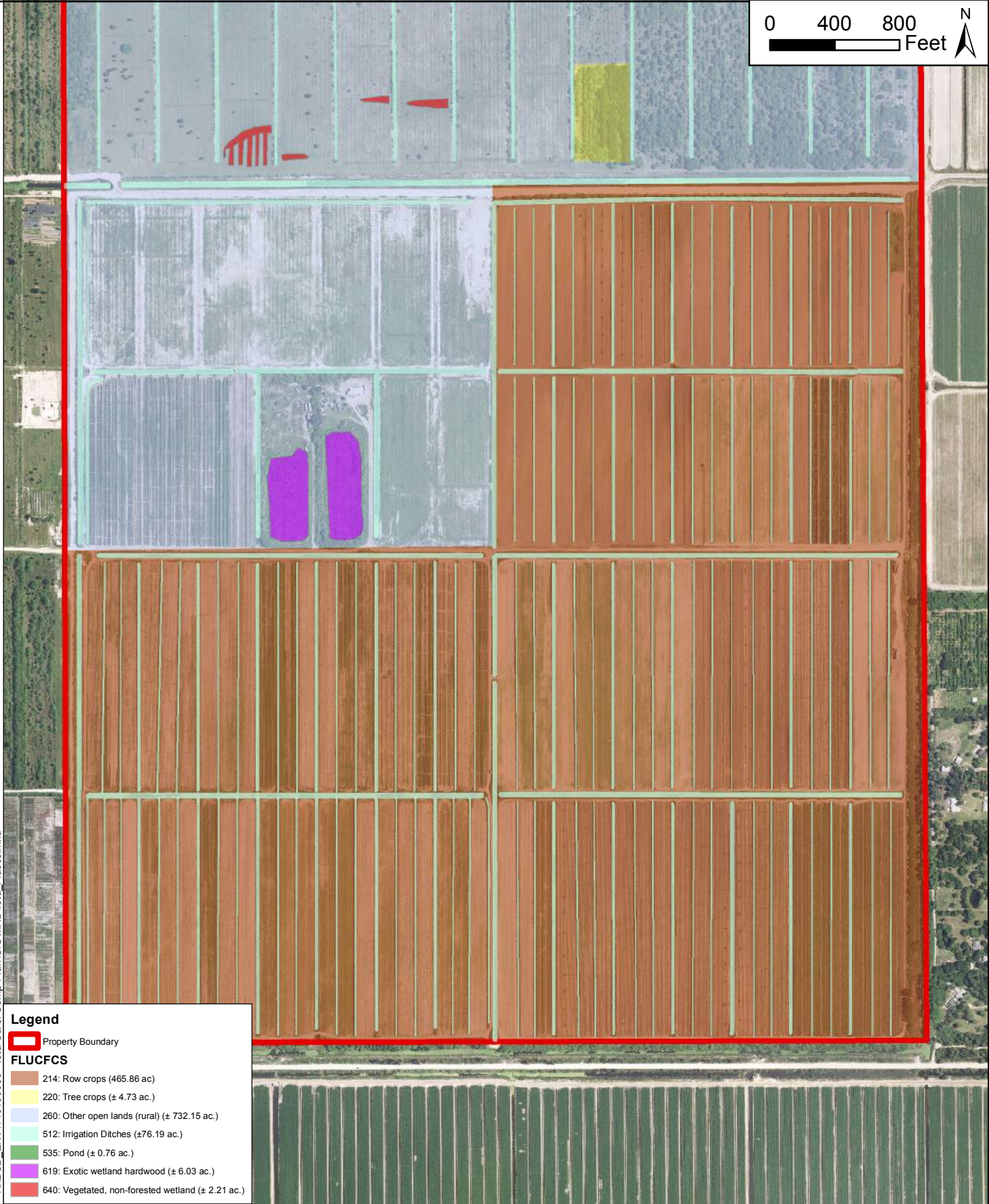
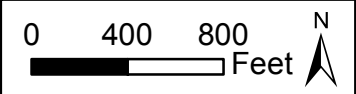
**Iota Carol Comprehensive Plan Amendment
 Palm Beach County, Florida**

1 inch = 800 feet

PROJECT NUMBER: 140190000

OCTOBER 2016

FIGURE 4



K:\BCD_ENV\140190000 - Iota Carol Comp Plan\GIS\MXD\Iota_Fluccs.mxd

Legend

Property Boundary

FLUCFCS

- 214: Row crops (465.86 ac)
- 220: Tree crops (± 4.73 ac.)
- 260: Other open lands (rural) (± 732.15 ac.)
- 512: Irrigation Ditches (±76.19 ac.)
- 535: Pond (± 0.76 ac.)
- 619: Exotic wetland hardwood (± 6.03 ac.)
- 640: Vegetated, non-forested wetland (± 2.21 ac.)

Source: Palm Beach County



© 2016 Kimley-Horn and Associates, Inc.
 1615 S. Congress Ave., Ste. 201
 Delray Beach, FL 33445
 Phone (561) 330-2345 www.kimley-horn.com

Florida Land Use, Cover, and Forms Classification System Map

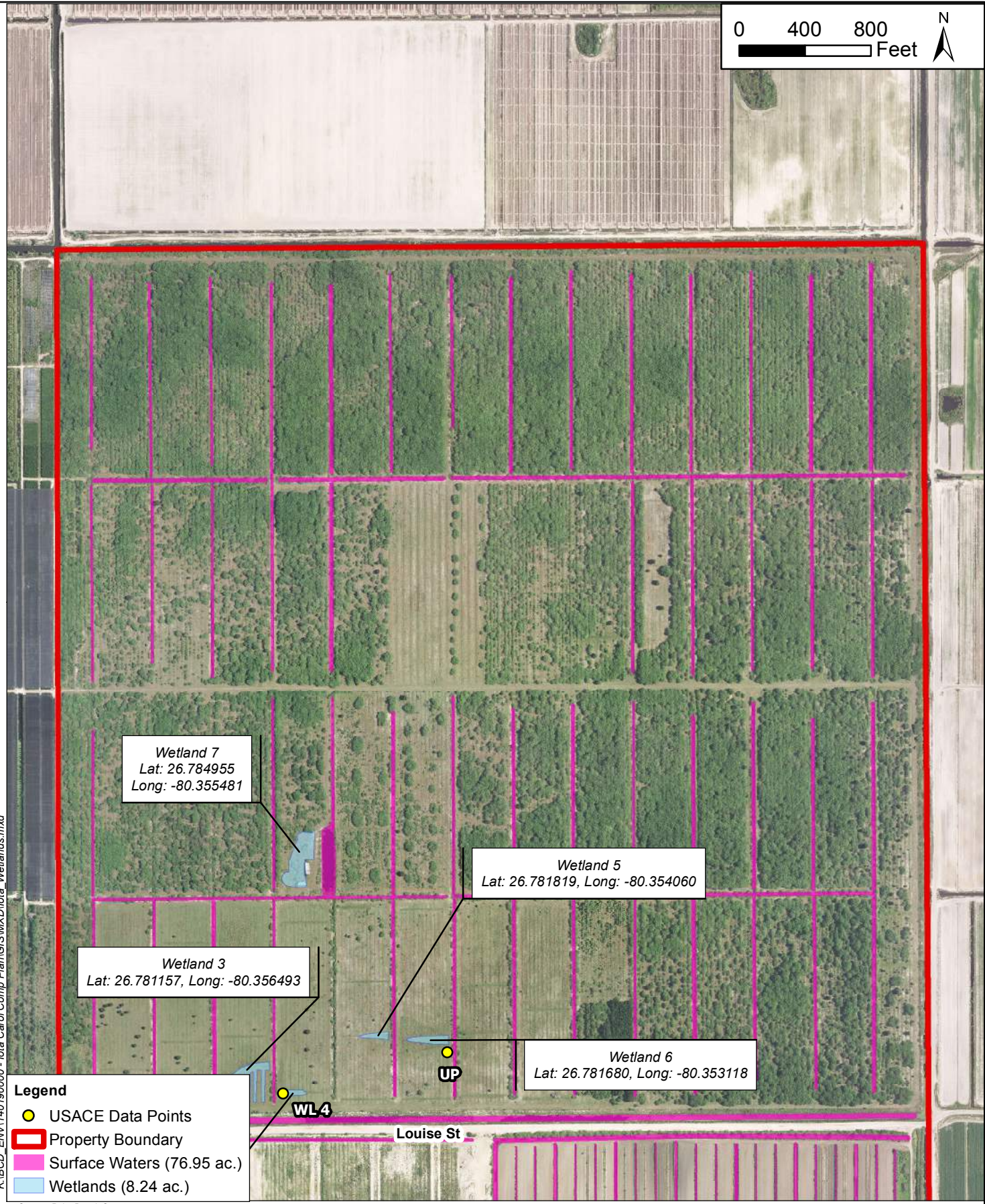
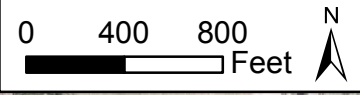
**Iota Carol Comprehensive Plan Amendment
 Palm Beach County, Florida**

1 inch = 800 feet

PROJECT NUMBER: 140190000

OCTOBER 2016

FIGURE 4



Wetland 7
 Lat: 26.784955
 Long: -80.355481

Wetland 5
 Lat: 26.781819, Long: -80.354060

Wetland 3
 Lat: 26.781157, Long: -80.356493

Wetland 6
 Lat: 26.781680, Long: -80.353118

Legend

- USACE Data Points
- Property Boundary
- Surface Waters (76.95 ac.)
- Wetlands (8.24 ac.)

K:\BCD_ENV\140190000 - Iota Carol Comp Plan\GIS\MXD\Iota Wetlands.mxd

Source: Palm Beach County

USACE Data Point Map

**Iota Carol-Comprehensive Plan Amendment
 Palm Beach County, Florida**



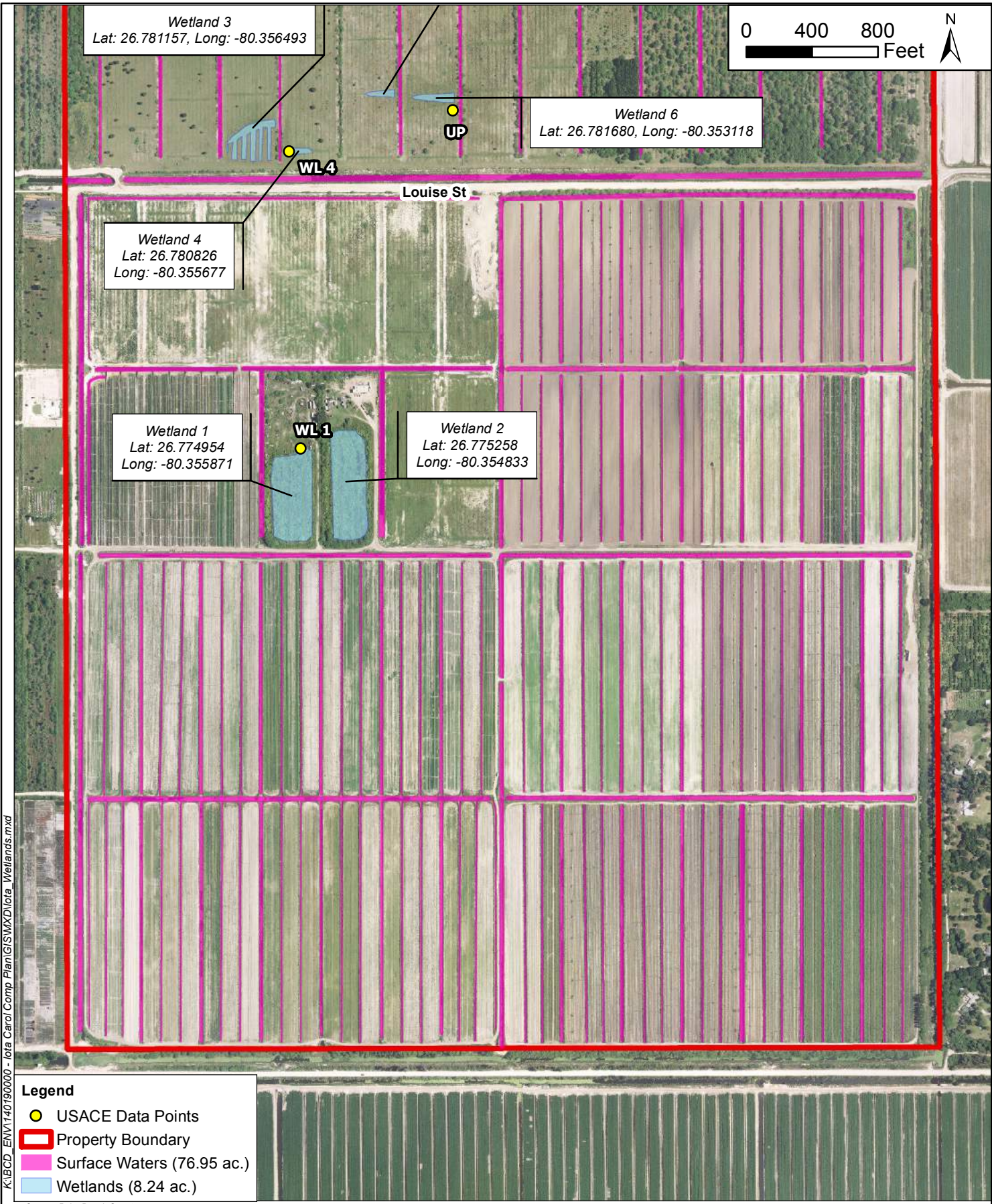
© 2017 Kimley-Horn and Associates, Inc.
 1615 S. Congress Ave., Ste. 201
 Delray Beach, FL 33445
 Phone (561) 330-2345 www.kimley-horn.com

1 inch = 800 feet

PROJECT NUMBER: 140190000

JANUARY 2017

FIGURE 5



K:\BCD_ENV\140190000 - Iota Carol Comp Plan\GIS\MXD\Iota_Wetlands.mxd

Kimley»Horn

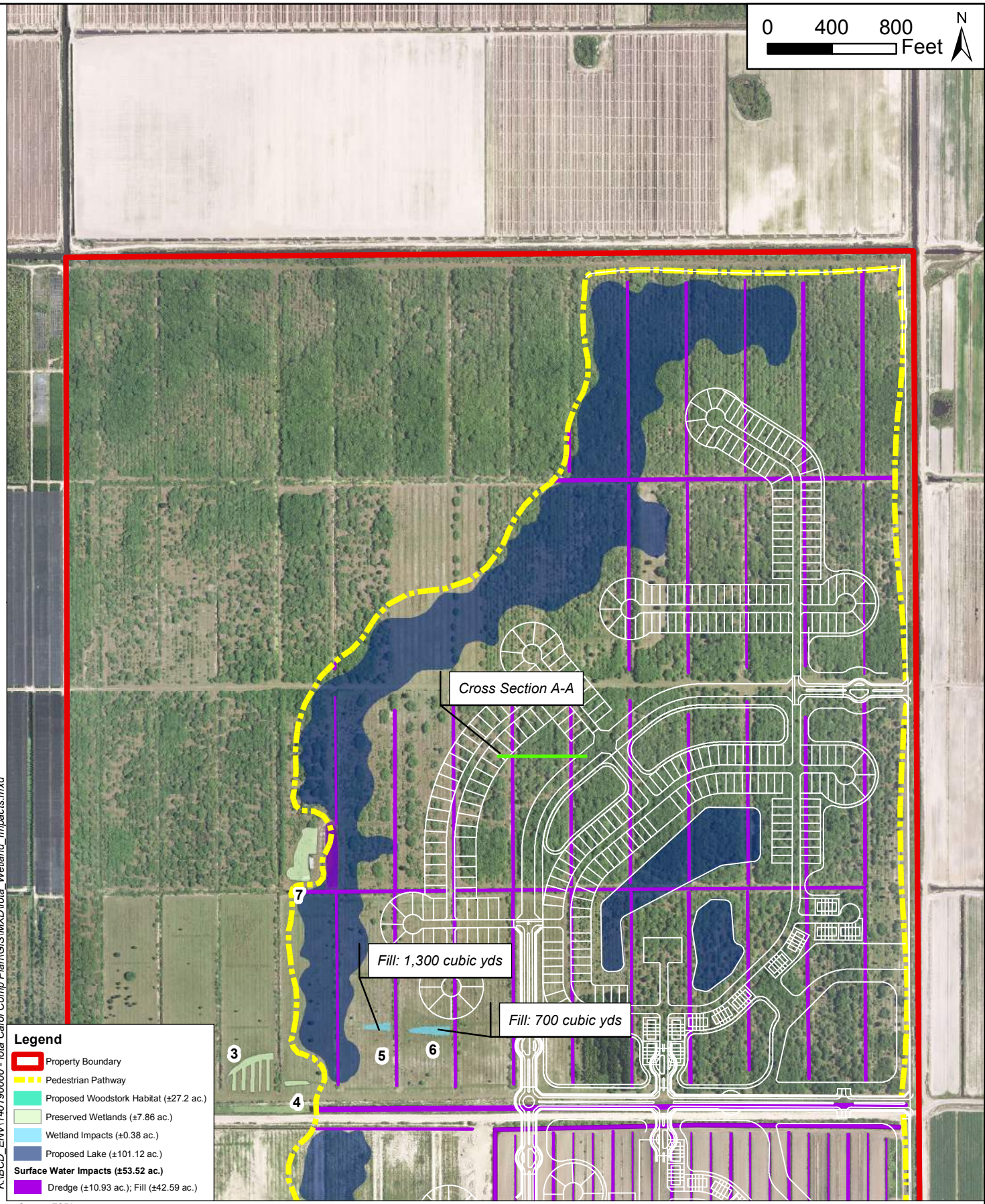
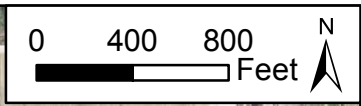
© 2017 Kimley-Horn and Associates, Inc.
1615 S. Congress Ave., Ste. 201
Delray Beach, FL 33445
Phone (561) 330-2345 www.kimley-horn.com

USACE Data Point Map

**Iota Carol-Comprehensive Plan Amendment
Palm Beach County, Florida**

Page 2 of 2

1 inch = 800 feet	PROJECT NUMBER: 140190000	JANUARY 2017	FIGURE 5
-------------------	---------------------------	--------------	----------



Legend

- Property Boundary
- Pedestrian Pathway
- Proposed Woodstork Habitat (±27.2 ac.)
- Preserved Wetlands (±7.86 ac.)
- Wetland Impacts (±0.38 ac.)
- Proposed Lake (±101.12 ac.)
- Surface Water Impacts (±53.52 ac.)**
- Dredge (±10.93 ac.); Fill (±42.59 ac.)

Source: ESRI

K:\BCD_ENV\140190000 - Iota Carol Comp Plan\GIS\MXD\Iota_Wetland_Impacts.mxd

Kimley»Horn

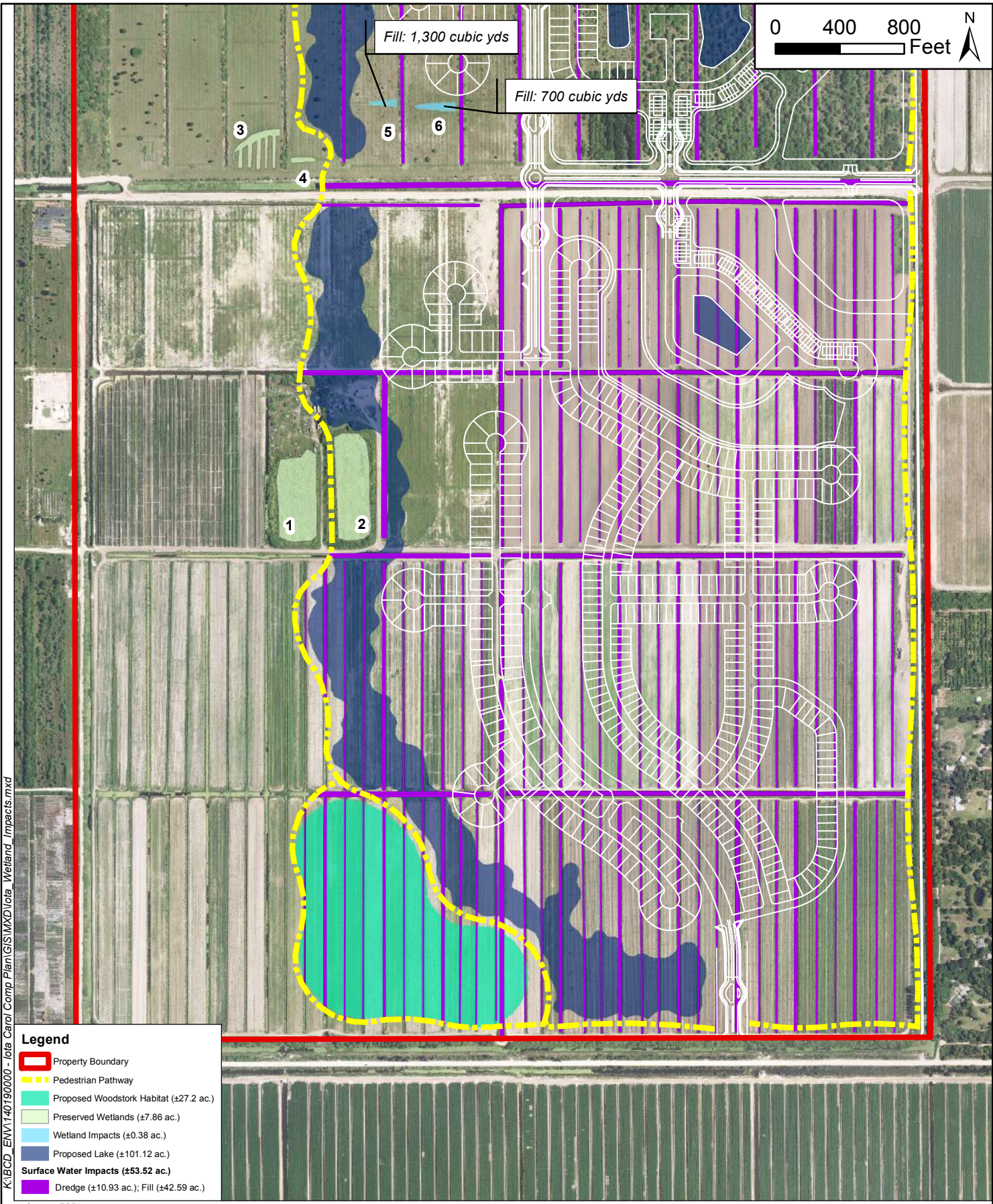
© 2017 Kimley-Horn and Associates, Inc.
 1615 S. Congress Ave., Ste. 201
 Delray Beach, FL 33445
 Phone (561) 330-2345 www.kimley-horn.com

Wetlands and Surface Waters Impacts Map

**Iota Carol Comprehensive Plan Amendment
 Palm Beach County, Florida**

Page 1 of 2

1 inch = 800 feet	PROJECT NUMBER: 140190000	MARCH 2017	FIGURE 6
-------------------	---------------------------	------------	----------



K:\BCD_ENV\140190000 - Iota Carol Comp Plan\GIS\MXD\Iota - Wetland_Impacts.mxd

- Legend**
- Property Boundary
 - Pedestrian Pathway
 - Proposed Woodstork Habitat (±27.2 ac.)
 - Preserved Wetlands (±7.86 ac.)
 - Wetland Impacts (±0.38 ac.)
 - Proposed Lake (±101.12 ac.)
 - Surface Water Impacts (±53.52 ac.)**
 - Dredge (±10.93 ac.); Fill (±42.59 ac.)

Source: ESRI

Wetlands and Surface Waters Impacts Map

**Iota Carol Comprehensive Plan Amendment
Palm Beach County, Florida**

Kimley»Horn
 © 2017 Kimley-Horn and Associates, Inc.
 1615 S. Congress Ave., Ste. 201
 Delray Beach, FL 33445
 Phone (561) 330-2345 www.kimley-horn.com

1 inch = 800 feet

PROJECT NUMBER: 140190000

MARCH 2017

FIGURE 6